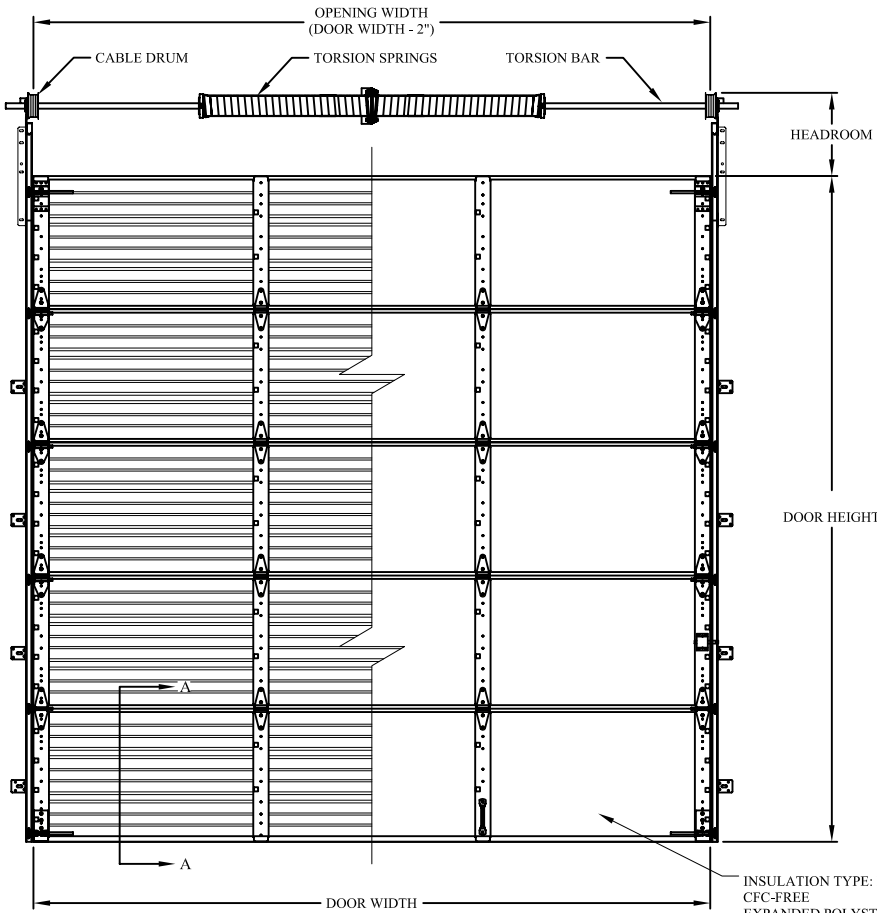


MODELS 2500/2500I/2500S

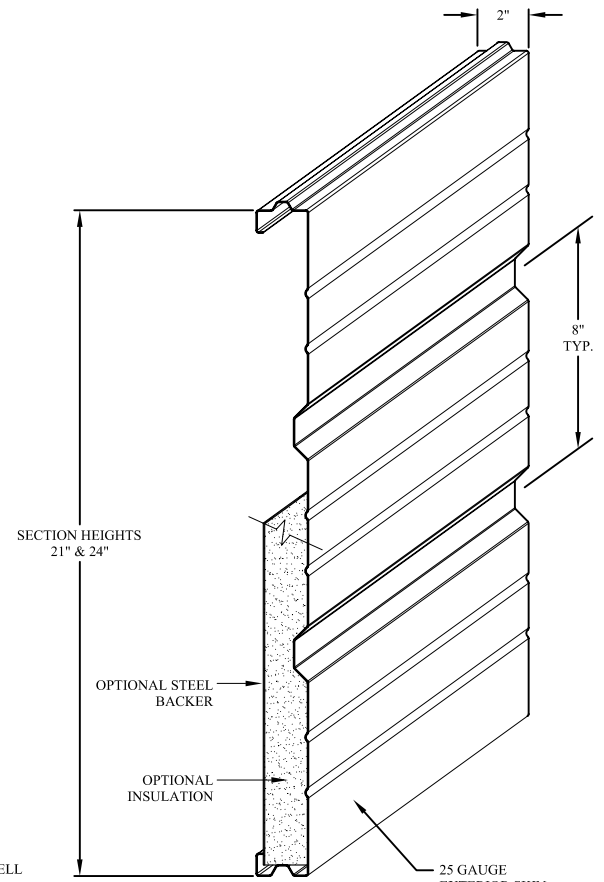


GARAGE DOORS

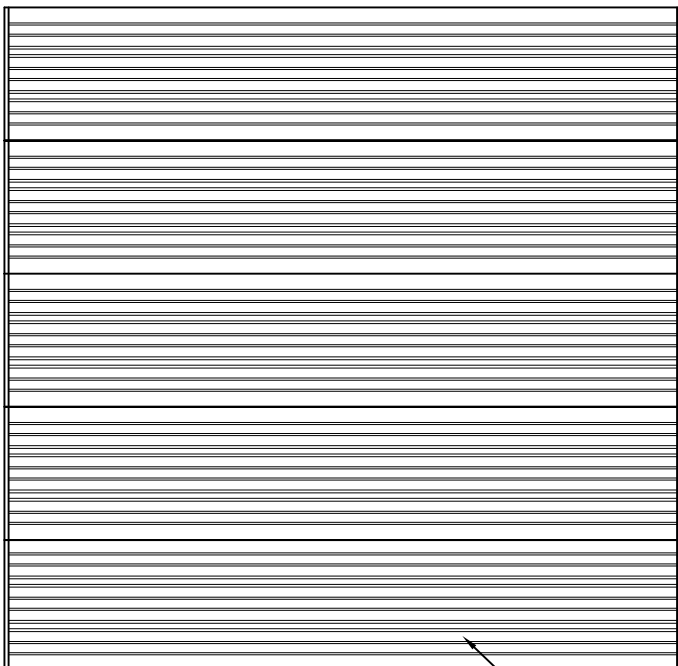


INTERIOR ELEVATION

INSULATION TYPE: HAIRCELL
CFC-FREE
EXPANDED POLYSTYRENE
R= 6.84/U=0.15
(ALSO AVAILABLE WITH
25ga STEEL BACKER)

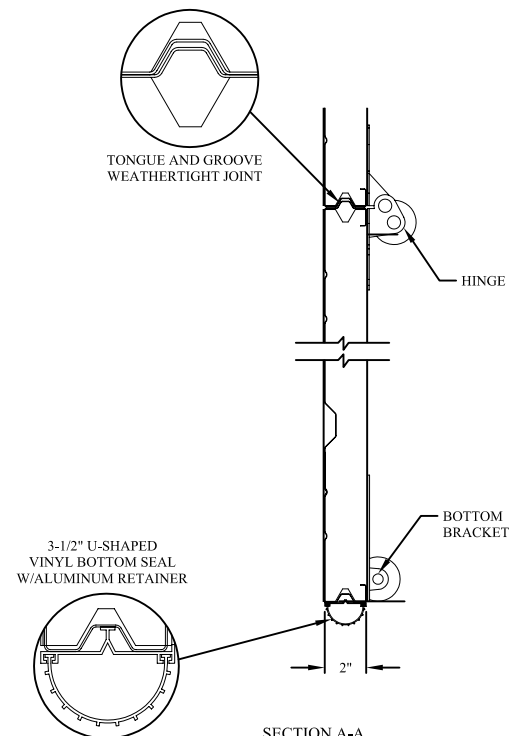


ISOMETRIC PROFILE



EXTERIOR ELEVATION

25 GAUGE
EXTERIOR SKIN

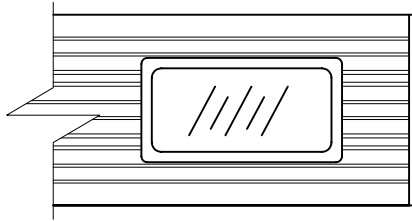


SECTION A-A

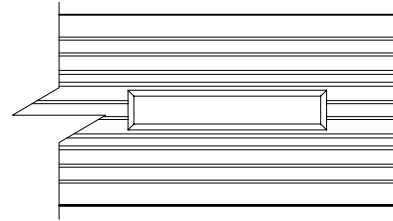
MODELS 2500/2500I/2500S



GARAGE DOORS



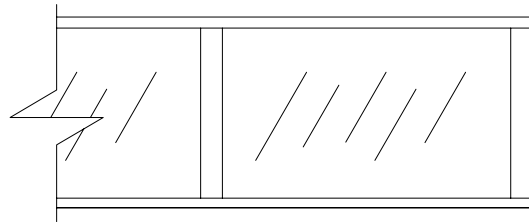
24" x 12" WINDOW W/ NON-INSULATED 1/8" PLEXI-GLASS AND DOUBLE PANE INSULATED PLEXI-GLASS



24" x 4" WINDOW WITH 1/8" PLEXI-GLASS

DOOR WIDTH	MAX No. WINDOWS
8'2"	2
9'2"	2
10'2"	3
11'2"	3
12'2"	3
13'2"	4
14'2"	4

NOTE: CHART ABOVE INDICATES MAXIMUM NUMBER OF WINDOWS PER SECTION.



ALUMINUM FULLVIEW SECTION

DOOR WIDTH	DOOR HEIGHTS							
	7'1"	8'1"	9'1"	10'1"	11'1"	12'1"	13'1"	14'1"
8'2" - 12'2"	4	4	5	5	6	6	7	7
12'4" - 14'2"	2	2	3	3	4	4	5	5
16'4" - 24'2"	2	2	2	2	2	2	2	2

NOTE: CHART ABOVE INDICATES MAXIMUM NUMBER OF ALUMINUM FULLVIEW SECTIONS PER DOOR SIZE.

DOOR WIDTH	MAX No. PANELS
8'2"	2
9'2"	2
10'2"	3
11'2"	3
12'2"	3
13'2"	4
14'2"	4

NOTE: CHART ABOVE INDICATES MAXIMUM NUMBER OF PANELS PER SECTION.

SECTION ARRANGEMENT CHART

Door Height	21" Bottom	21" Intermediate	24" Bottom	24" Intermediate
7'0"	1	3		
7'3"		3	1	
7'6"		2	1	1
7'9"		1	1	2
8'0"				4
8'3"	Not Available			
8'6"	Not Available			
8'9"	1	4		
9'0"		4	1	
9'3"		3	1	1
9'6"		2	1	2
9'9"		1	1	3
10'0"			1	4
10'3"	Not Available			
10'6"	1	5		
10'9"		5	1	
11'0"		4	1	1
11'3"		3	1	2
11'6"		2	1	3
11'9"		1	1	4
12'0"			1	5
12'3"	1	6		
12'6"		6	1	
12'9"		5	1	1
13'0"		4	1	2
13'3"		3	1	3
13'6"		2	1	4
13'9"		1	1	5
14'0"			1	6
14'0"	1	7		